

Presenting and Using Collected Data.

Victor W. Barr, Ph.D.

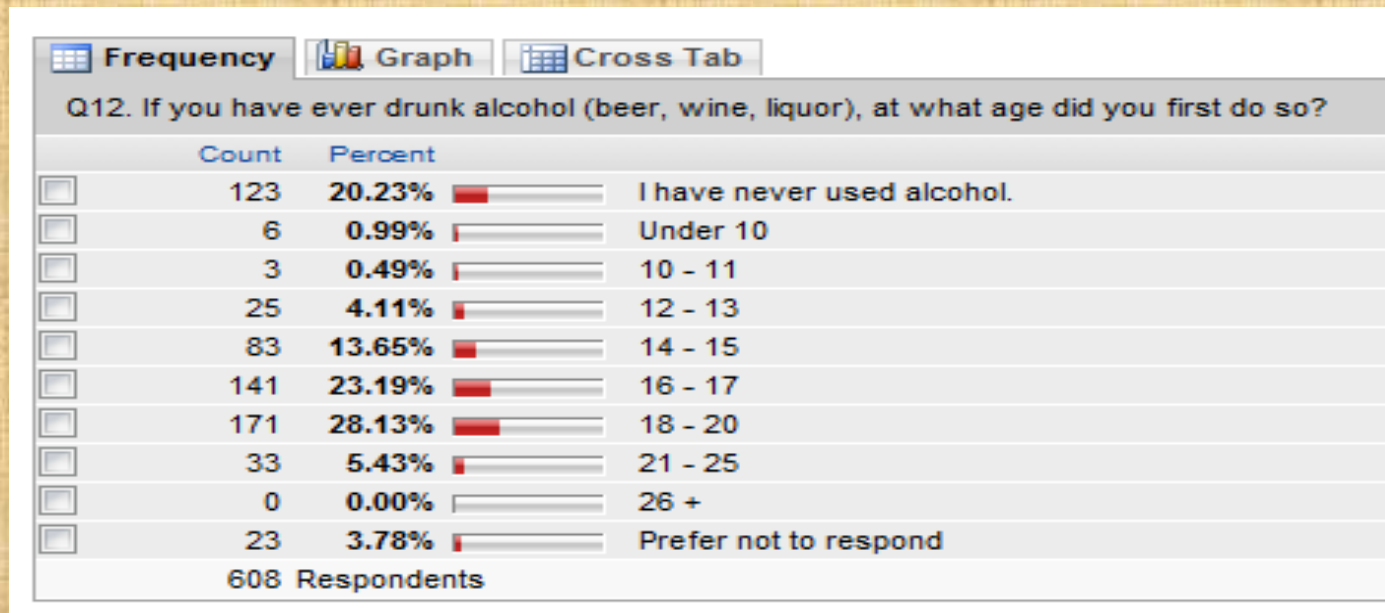
Dan Reilly

Exercise

Using your Data

Create Meaning from Data

- Read information from data sets,
- Basics of aggregate data analysis
- Create meaning from the data.



Data Depiction

Print



**BEING HEALTHY
AND SMART
JUST ADDS UP.**

The average GPA of students who report not drinking is 3.24.

But as alcohol intake increases, GPA decreases.

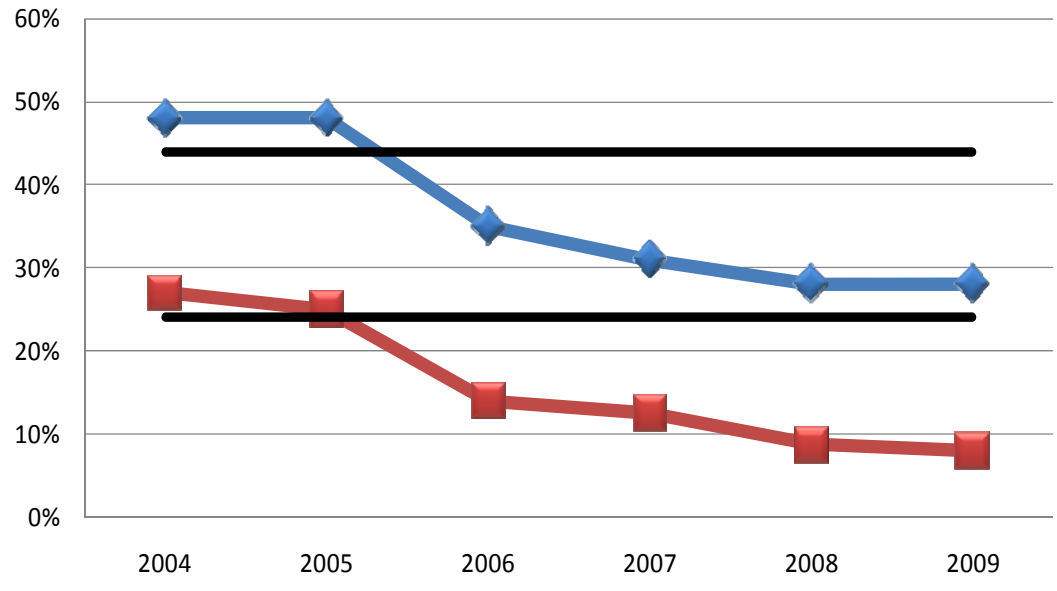
At UT, **32%** of students report **not drinking alcohol** within the past year, and **80%** report having four or fewer drinks when they go out. **You do the math.**



Information based on survey data collected by the Safety, Environment, & Education Committee (SEEC) from 300 randomly selected UT student e-mail responses.

Presentation

Compared to National Rates



Strategic Planning

i.e. Off-Campus

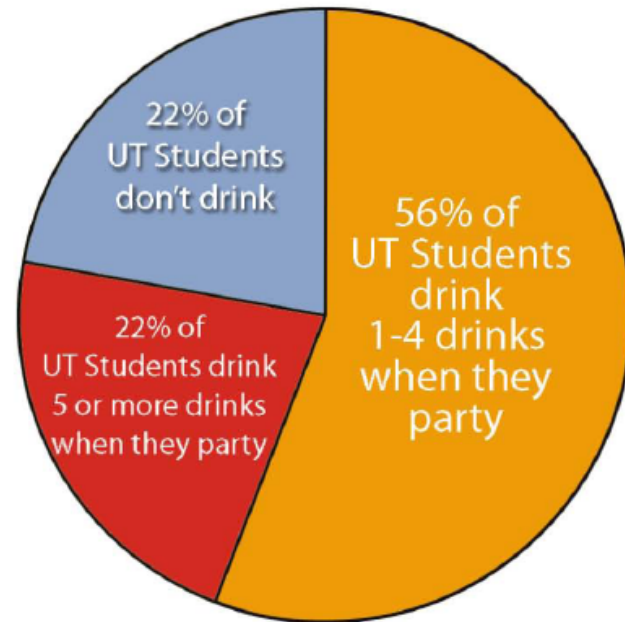
Goal Refinement

i.e. Negative Consequences

Data Display

- Improve Departmental assessment
- Identification of assessment item
 - additions
 - modifications

UT Students are **HEALTHY**



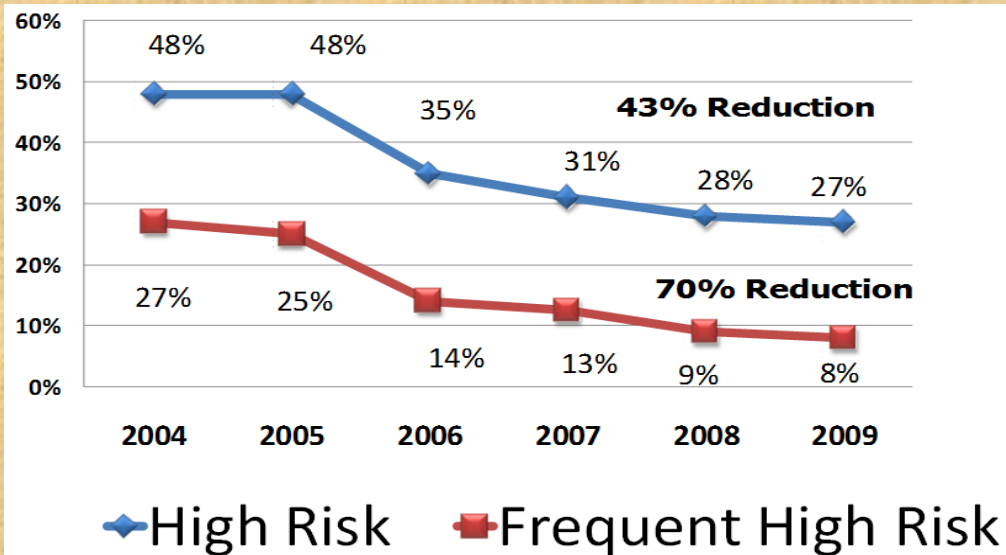
$22\% + 56\% = 78\%$
of UT Students have **4 or FEWER**
drinks when they party

SEE CENTER
SAFETY, ENVIRONMENT, & EDUCATION CENTER

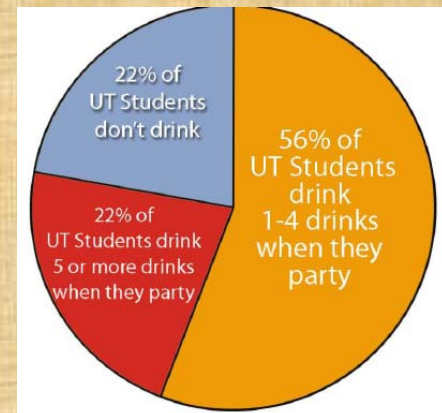
Learning Outcomes

UT Students are **HEALTHY**

22% + 56% = 78%
of UT Students have **4 or FEWER**
drinks when they party



- Data into meaningful information.
- Convert numbers into meaningful:
 - Spoken Statements
 - Texts
 - Visual Representations



Questions?

Discussion: